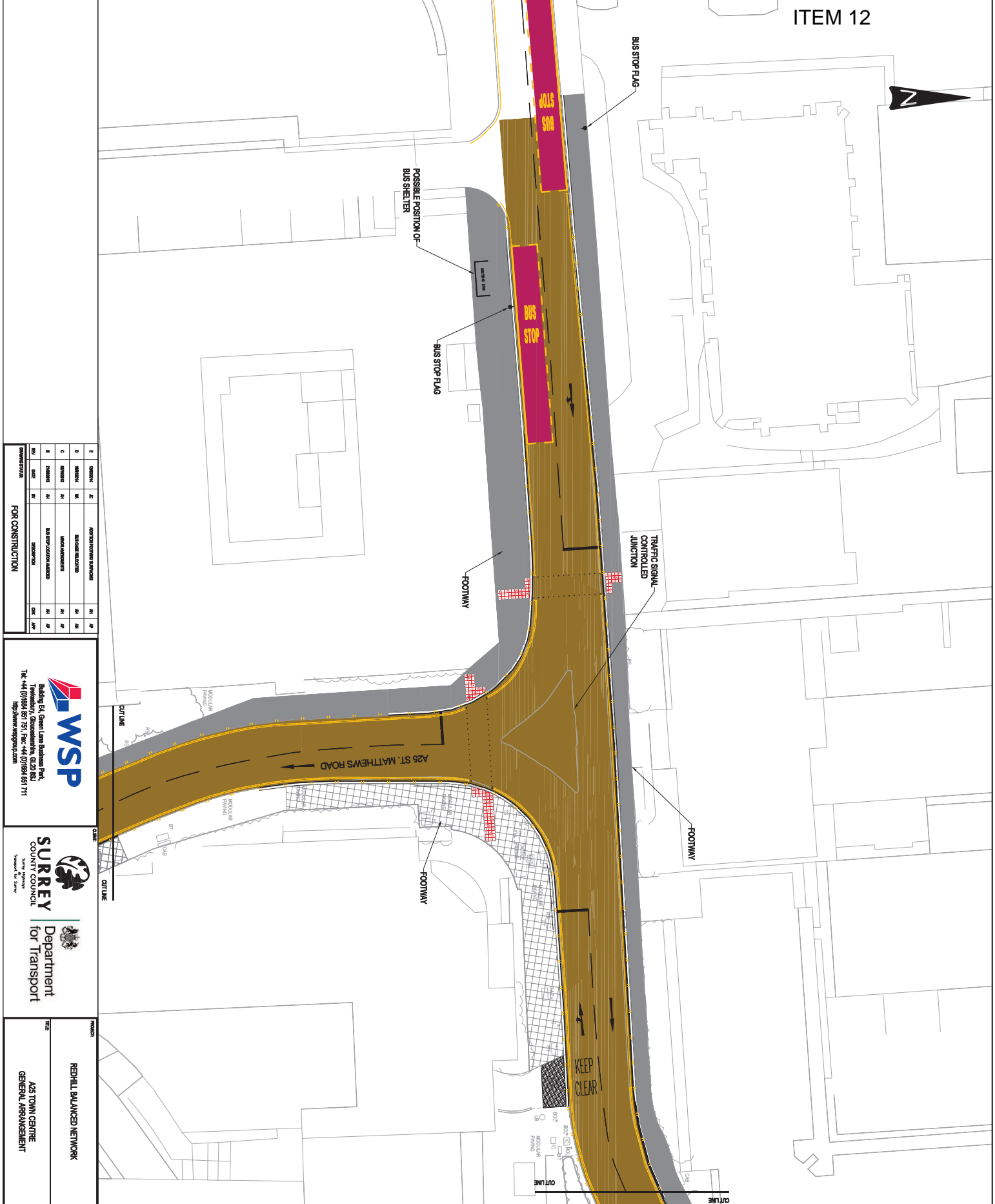


ITEM 12



NO.	DATE	BY	DESCRIPTION	CHK	APP
1			FOR CONSTRUCTION		

Building 54, Green Lane Business Park,
Towbridge, Gloucestershire, GL20 8SU
Tel: +44 (0)1884 881 731, Fax: +44 (0)1884 881 171
http://www.wspgroup.com

Surrey County Council
Department for Transport

PROJECT	REDHILL BALANCED NETWORK
TITLE	A25 TOWN CENTRE GENERAL ARRANGEMENT

SCALE @:	N.T.S.	DATE:	10/11/02	PROJECT NO.:	1011002-110	REV.:	E
DESIGNED BY:	AI	CHECKED BY:	AI	DATE:	30/03/03		



DO NOT SCALE

KEY

- 400x400mm RED TACTILE PAVING SLABS
- 400x400mm BLUE TACTILE PAVING SLABS
- 400x400mm BUFF TACTILE PAVING SLABS
- 400x400mm PAVING SLABS
- 200x100mm PAVING BLOCKS
- PUBLIC REALM WORKS
- BITUMINOUS FOOTWAY SURFACING
- CHARBROKEN SURFACING
- RAISED TABLE TOP
- ACCOMMODATION WORKS
- RED SURFACING AT BUS STOP
- STAINLESS STEEL CYCLE STOPS
- STAINLESS STEEL CROSSING JUNCTIONS & PEDESTRIAN CROSSING STUDIOS AT 'M' CENTRES.

This page is intentionally left blank